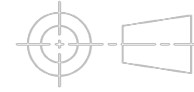
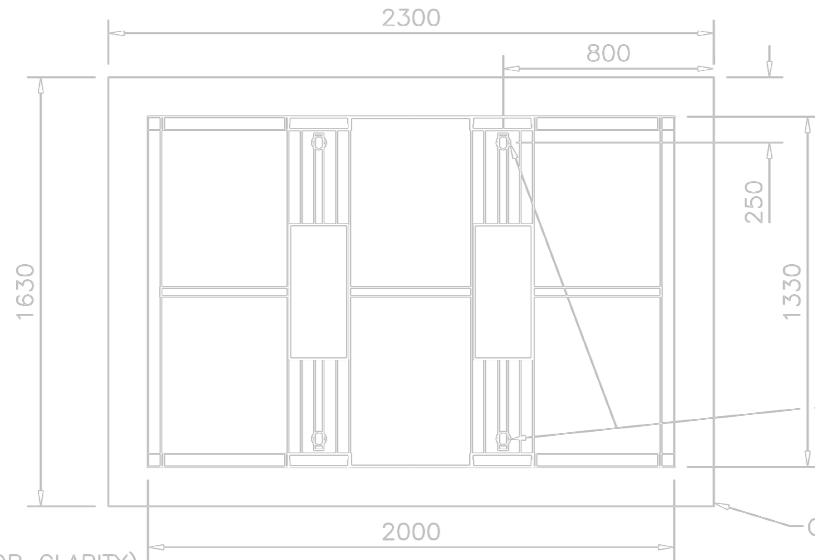


DRG.No. 491C-203
 USED ON

DRAWN TO B.S. 308



THIRD ANGLE PROJECTION



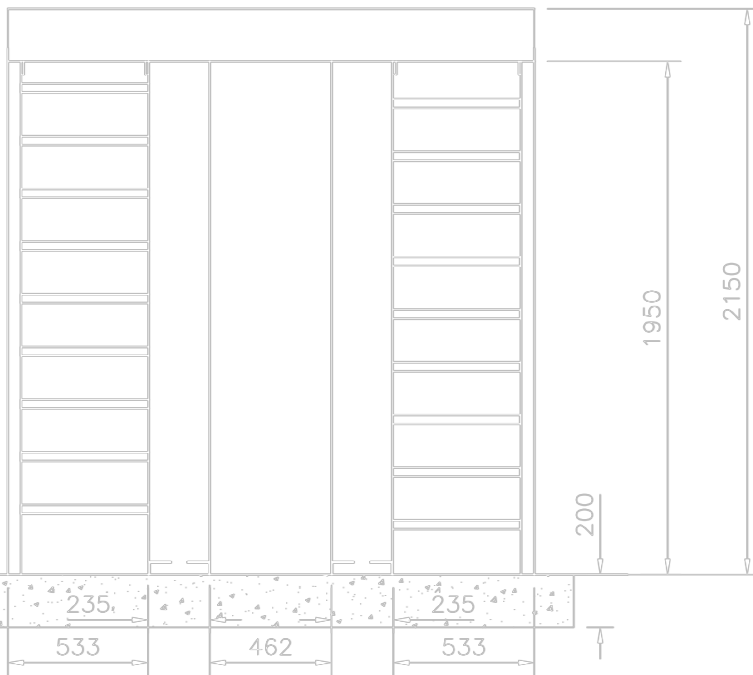
NOTE :-
 NORMALLY THE POWER SUPPLY UNIT AND CONTROL BOARD ENCLOSURE ARE CONTAINED WITHIN THE CANOPY. CABLES TO THIS AREA (MAINS SWA AND SIGNAL CABLES) ARE DUCTED THROUGH VERTICAL SECTIONS OF THE TURNSTILE.

APPROX. POSITION FOR Ø50 DUCT EMERGENCE

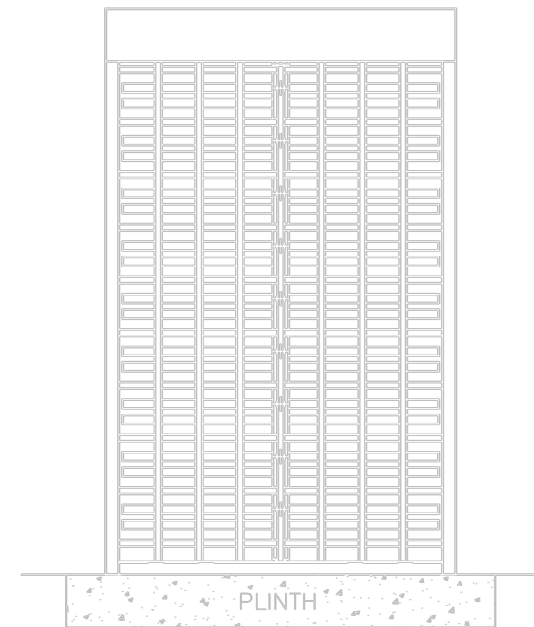
EAGLE AUTOMATION LIMITED
 RESERVE THE RIGHT TO MODIFY THE DESIGN WITHOUT NOTICE

PLAN VIEW
 (OMITTING CANOPY FOR CLARITY)

CONCRETE PLINTH



FRONT ELEVATION



SIDE ELEVATION

| | | | | | | | | |
|-------|--------|---------|----------------------------|------|-------------|--|--|--|
| | | | PROTECTIVE FINISH - | | | MATERIAL - | | |
| | | | TOLERANCES FOR DIMENSIONS | | | STORES REF. | | |
| | | | DIMS. SHOWN THUS 1 ±0.4 | | | TITLE SALES ILLUSTRATION OF THE 'SARUM' DOUBLE TURNSTILE (90° WITH STRAIGHT BARS) | | |
| | | | DIMS. SHOWN THUS 10 ±0.15 | | | | | |
| | | | DIMS. SHOWN THUS 100 ±0.05 | | | DRG.No. 491C-203 | | |
| | | | UNLESS OTHERWISE STATED | | | A3 | | |
| B | 6-2-98 | - | ISSUE | DATE | CHANGE NOTE | ALL DIMENSIONS IN MILLIMETRES | | |
| DRAWN | CJV | CHECKED | CERTD. | | SCALE 1:20 | Eagle Automation Systems Ltd Focused on Protection and Security | | |