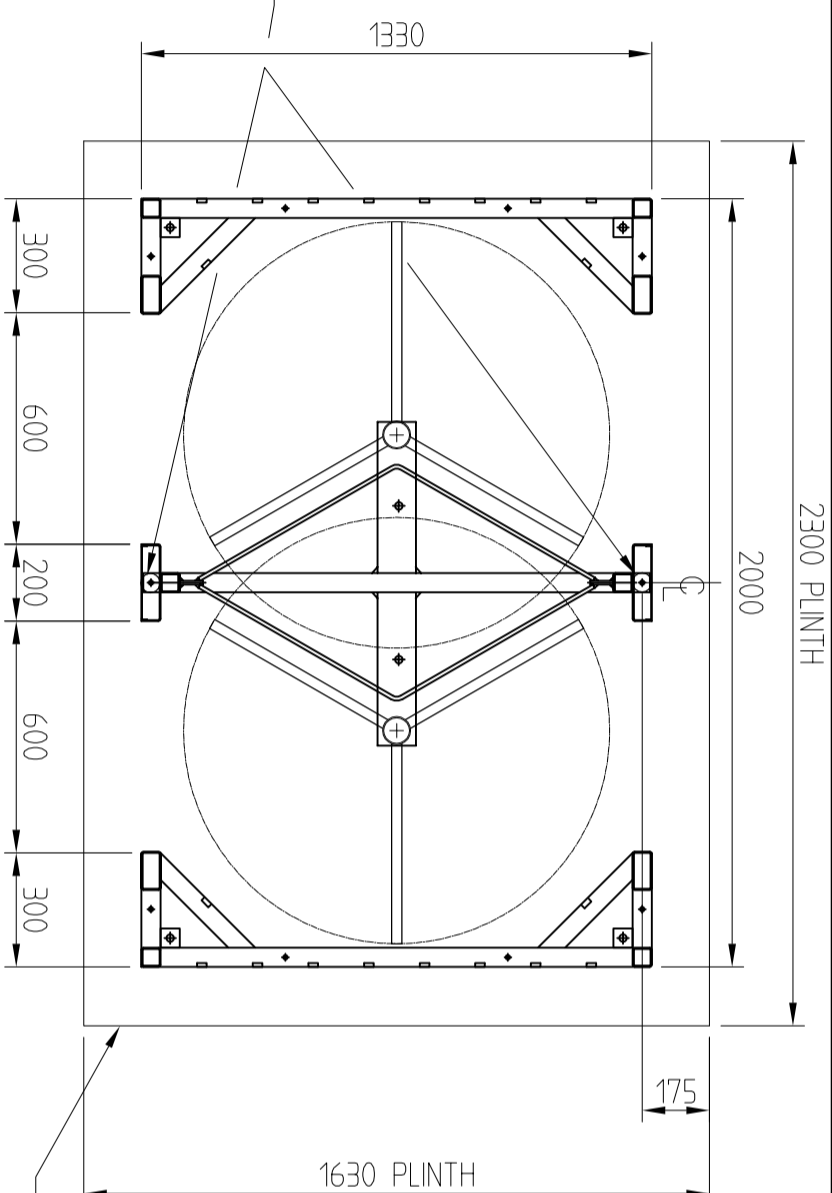


NOTE :-
 NORMALLY THE POWER SUPPLY UNIT AND CONTROL BOARD ENCLOSURE ARE CONTAINED WITHIN THE CANOPY. CABLES TO THIS AREA (MAINS SWA AND SIGNAL CABLES) ARE DUCTED THROUGH VERTICAL SECTIONS OF THE TURNSTILE.

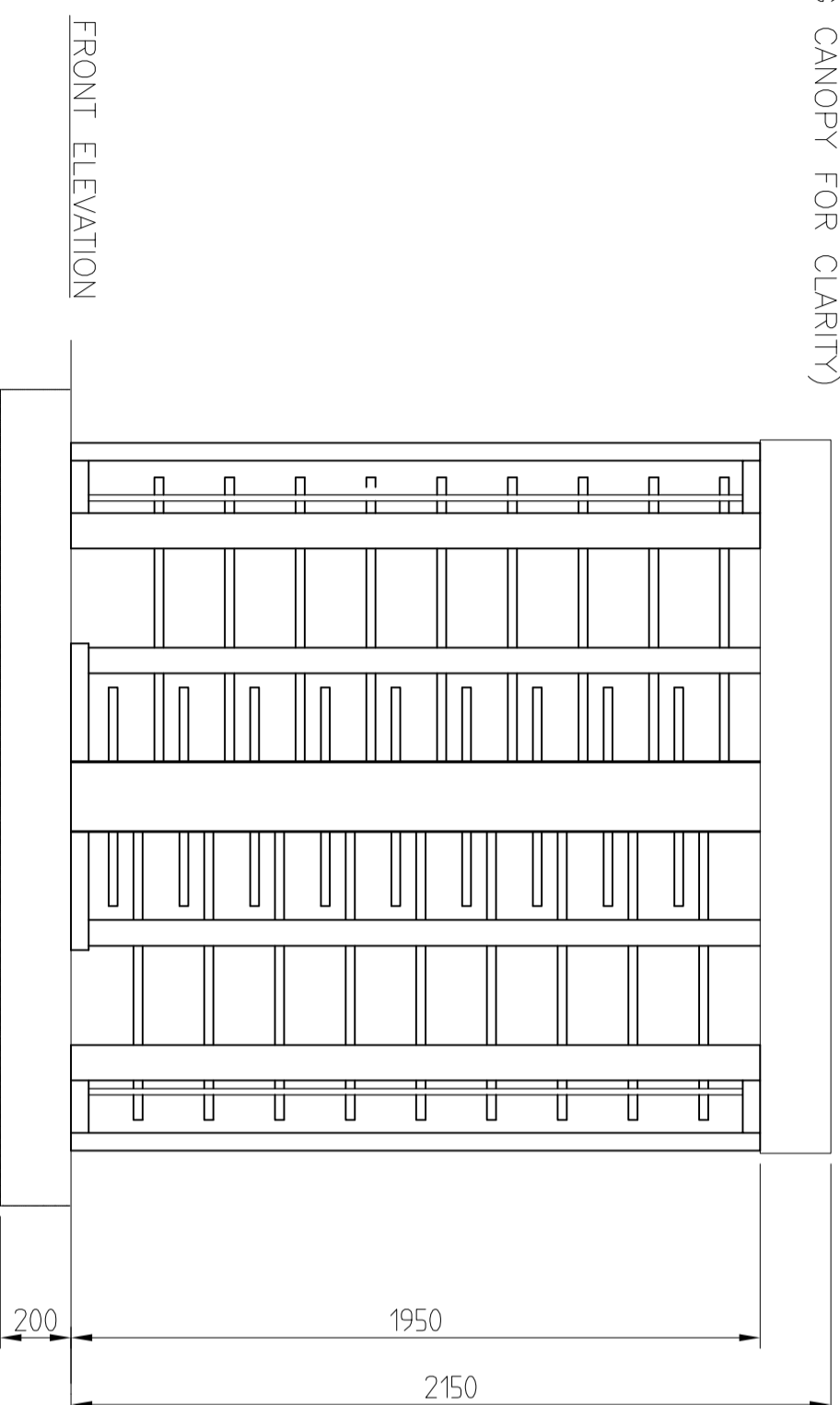
EAGLEAUTOMATIONLIMITED
 RESERVE THE RIGHT TO MODIFY
 THE DESIGN WITHOUT NOTICE



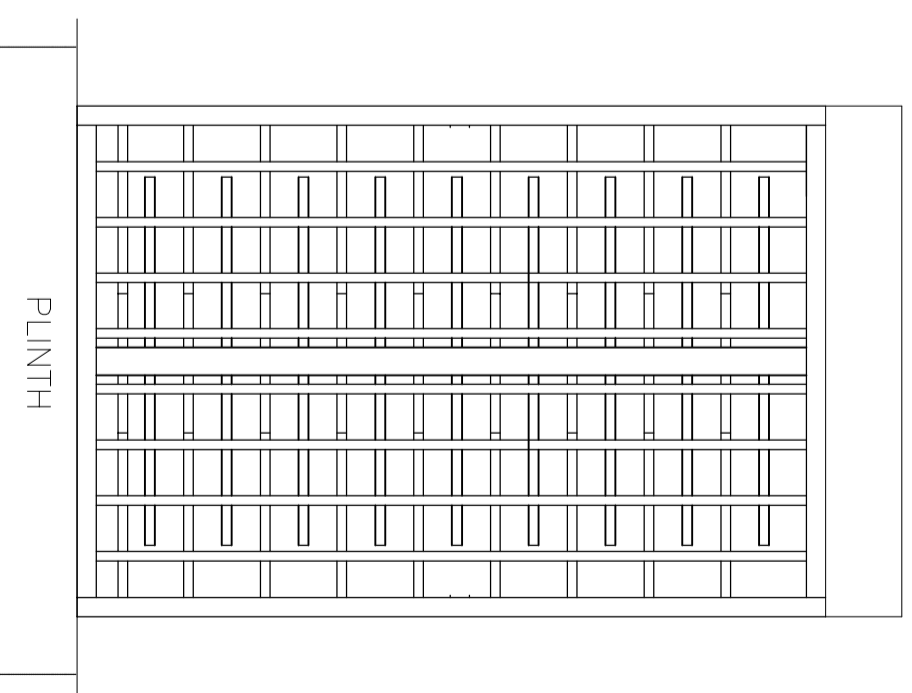
APPROX. POSITION FOR
 Ø50 DUCT EMERGENCE

PLAN VIEW

(OMITTING CANOPY FOR CLARITY)



FRONT ELEVATION



SIDE ELEVATION

PROTECTIVE FINISH
 POWDER COATED or ST. STL.

MATERIAL

TOLERANCES FOR DIMENSIONS

STORES REF.

DIMS. SHOWN THUS >449 ±1

TITLE SALES ILLUSTRATION OF

DIMS. SHOWN THUS 1 ±0.4

474 'SALISBURY' DOUBLE TURNSTILE

DIMS. SHOWN THUS 10 ±0.15

(120° WITH STRAIGHT BARS)

DIMS. SHOWN THUS 100 ±0.05

UNLESS OTHERWISE STATED

ALL DIMENSIONS IN MILLIMETRES



ISSUE	DATE	CHANGE NOTE	CERTD.	SCALE	NTS
B	6-2-98	-			
RAWN	CIV	CHECKED			