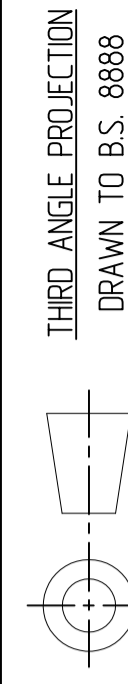


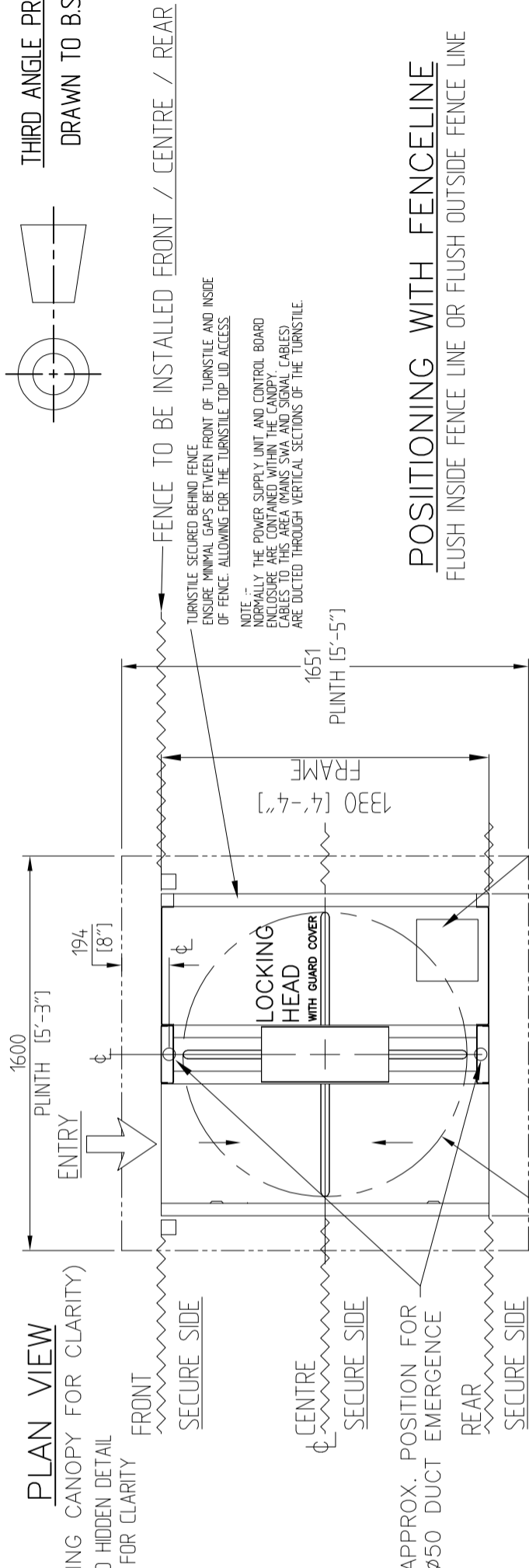
DRG.No.	1491-201-S
USED ON	-

EAGLE AUTOMATION LIMITED
RESERVE THE RIGHT TO MODIFY
THE DESIGN WITHOUT NOTICE

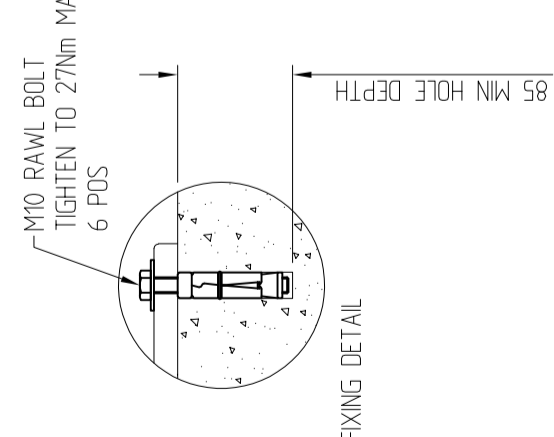
PLAN VIEW
(OMITTING CANOPY FOR CLARITY)
SELECTED HIDDEN DETAIL
OMITTED FOR CLARITY



DESIGN RIGHTS
INTELLECTUAL PROPERTY OF EAGLE AUTOMATION SYSTEMS LIMITED
COPYRIGHT © NOT TO BE COPIED WITHOUT PERMISSION
WARNING - SOME EAGLE AUTOMATION LIMITED PRODUCTS ARE ALSO THE
SUBJECT OF PATENT PROTECTION

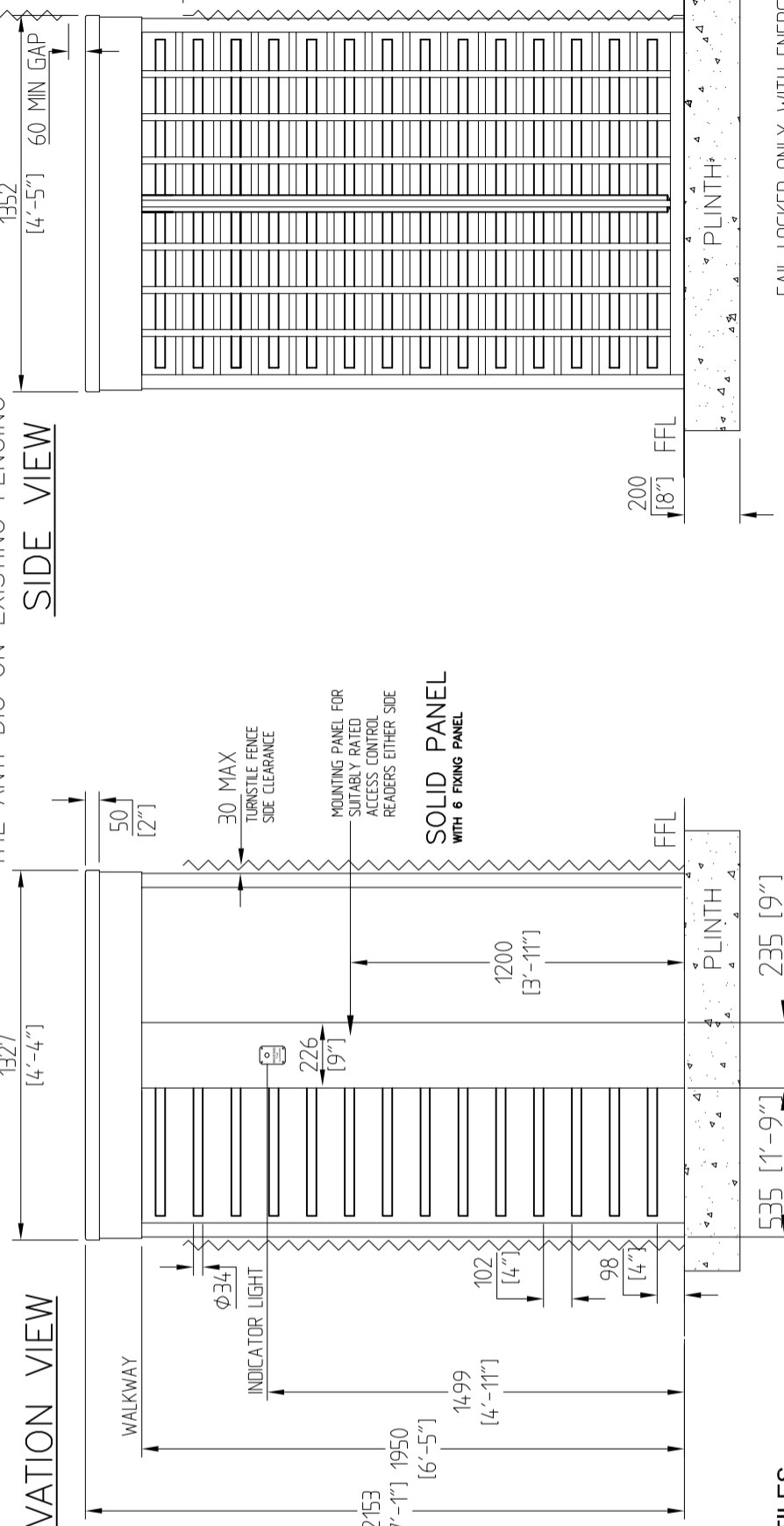


POSITIONING WITH FENCELINE
FLUSH INSIDE FENCE LINE OR FLUSH OUTSIDE FENCE LINE

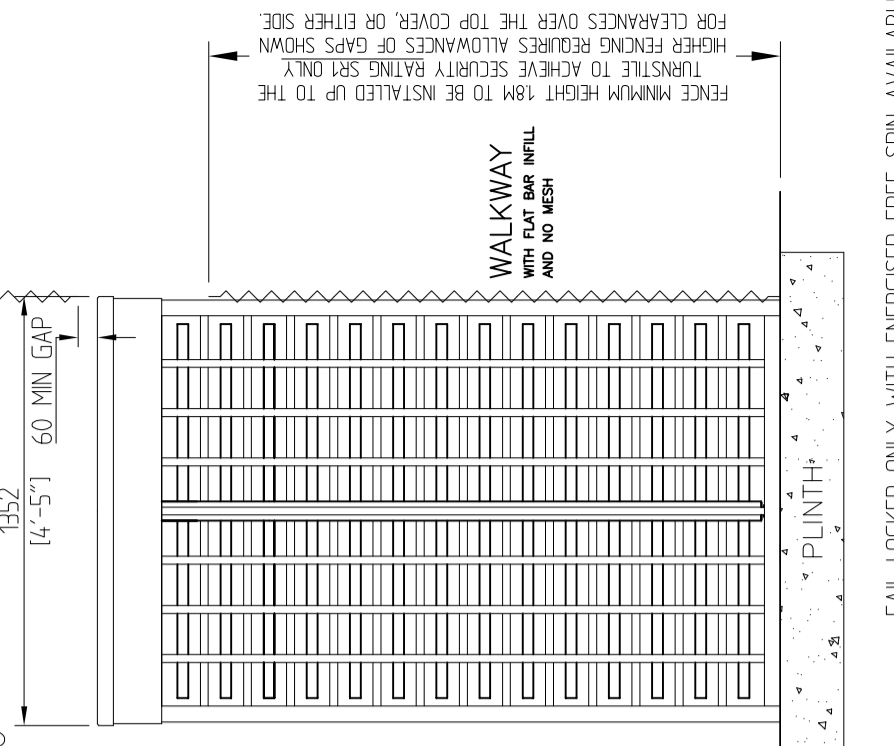


CONTROLS 400S-C1 PSU
IN TOP CANOPY AS STANDARD
OPTION TO MOVE OFF TURNSTILE FOR
CONTROL. ENSURE CABLES TO FEED
THROUGH FRAMING
CONCRETE PLINTH
C27-C35 PAV1 OR EQUIVALENT TO
THE ANTI DIG ON EXISTING FENCING

ELEVATION VIEW



SIDE VIEW



NOTE:
THIS DESIGN LAYOUT HAS TIGHT GAPS BETWEEN ROTOR ARMS
AND IS BASED ON THE REQUIREMENTS FOR SECURITY FENCELINE TURNSTILES.

PROTECTIVE FINISH		MATERIAL	
TOLERANCES FOR DIMENSIONS		STORES REF. BASED ON 491 - 430 STYLES	
DIMS. SHOWN THUS >449 ±1		TITLE	
DIMS. SHOWN THUS 1 ±0.4		SINGLE FULL HEIGHT SECURITY TURNSTILE	
DIMS. SHOWN THUS 10 ±0.15		SR1	
DIMS. SHOWN THUS 100 ±0.05		SINGLE FULL HEIGHT SECURITY T/S WITH 'STRAIGHT BAR' ROTOR ARMS	
UNLESS OTHERWISE STATED		DRG.No.	
ALL DIMENSIONS IN MILLIMETRES		1491-201-S	
DRAWN	MDK	CHECKED	CERTD.
SCALE	N.T.S	Eagle Automation Systems Ltd Focused on Protection and Security	
EAGLE AUTOMATION SYSTEMS LTD		FAIL LOCKED ONLY WITH ENERGISED FREE SPIN AVAILABLE	
A3		A3	